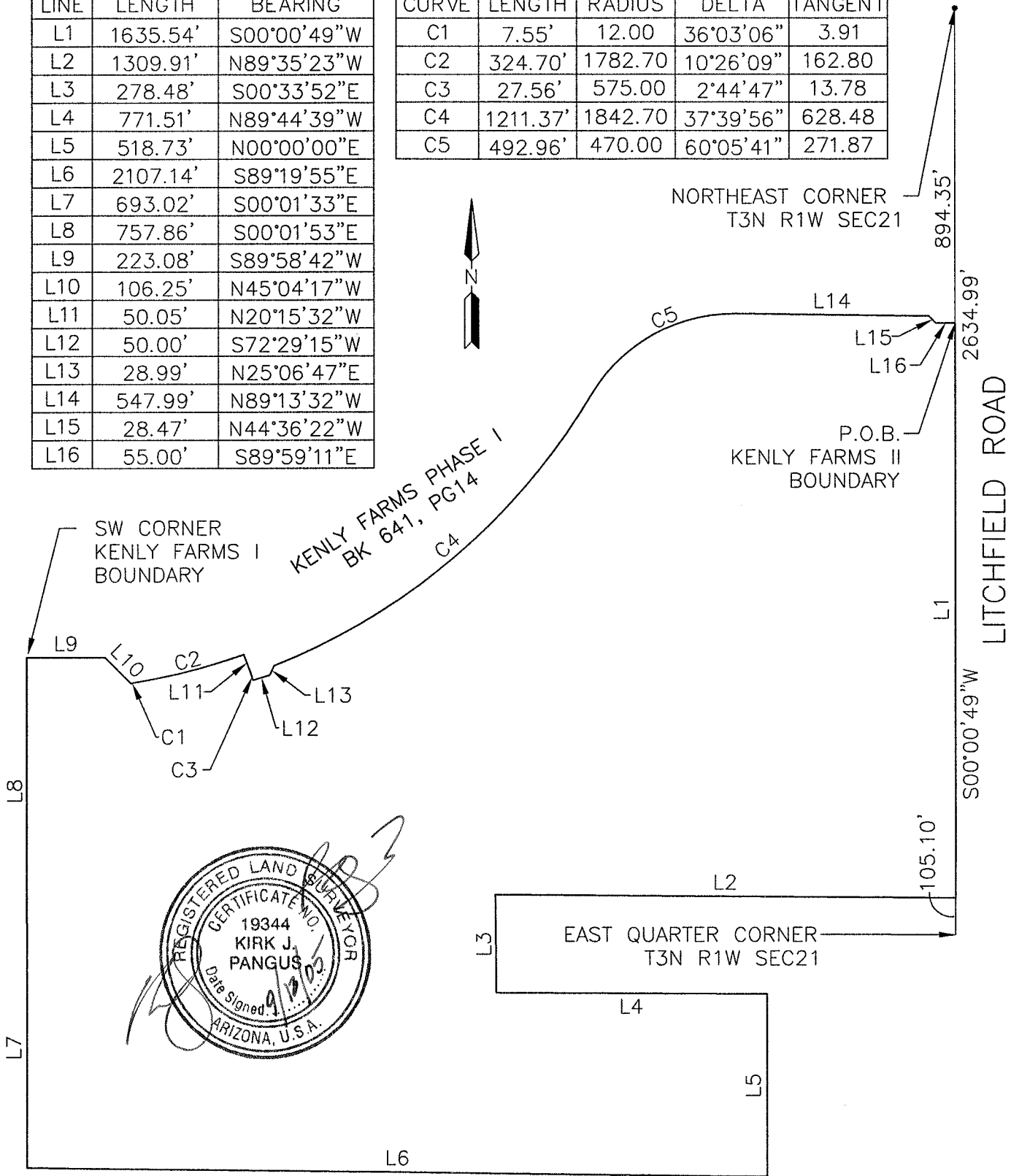
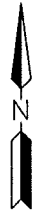


LINE TABLE		
LINE	LENGTH	BEARING
L1	1635.54'	S00°00'49"W
L2	1309.91'	N89°35'23"W
L3	278.48'	S00°33'52"E
L4	771.51'	N89°44'39"W
L5	518.73'	N00°00'00"E
L6	2107.14'	S89°19'55"E
L7	693.02'	S00°01'33"E
L8	757.86'	S00°01'53"E
L9	223.08'	S89°58'42"W
L10	106.25'	N45°04'17"W
L11	50.05'	N20°15'32"W
L12	50.00'	S72°29'15"W
L13	28.99'	N25°06'47"E
L14	547.99'	N89°13'32"W
L15	28.47'	N44°36'22"W
L16	55.00'	S89°59'11"E

CURVE TABLE				
CURVE	LENGTH	RADIUS	DELTA	TANGENT
C1	7.55'	12.00	36°03'06"	3.91
C2	324.70'	1782.70	10°26'09"	162.80
C3	27.56'	575.00	2°44'47"	13.78
C4	1211.37'	1842.70	37°39'56"	628.48
C5	492.96'	470.00	60°05'41"	271.87



CMX PROJ.	6763
DATE:	DEC. 2003
SCALE:	1"=400'
DRAWN BY:	RW
CHECKED BY:	RRN

**KENLY FARMS**  
CACTUS & LITCHFIELD  
SURPRISE, ARIZONA

**PHASE 2 LEGAL**

7740 N. 16TH ST. STE.100  
PHOENIX, AZ 85020  
PH (602) 567-1900  
FAX (602) 567-1901  
www.cmxinc.com



**KENLY FARMS II BOUNDARY**

A PARCEL OF LAND LOCATED IN THE EAST HALF OF SECTION 21, TOWNSHIP 3 NORTH, RANGE 1 WEST OF THE GILA AND SALT RIVER MERIDIAN, MARICOPA COUNTY, ARIZONA, MORE PARTICULARLY DESCRIBED AS FOLLOWS:

COMMENCING AT THE NORTHEAST CORNER OF SAID SECTION 21, FROM WHICH THE WEST QUARTER CORNER OF SAID SECTION 21 BEARS SOUTH 00 DEGREES 00 MINUTES 49 SECONDS WEST, A DISTANCE OF 2634.64 FEET;

THENCE SOUTH 00 DEGREES 00 MINUTES 49 SECONDS WEST, ALONG AND WITH THE EAST LINE OF THE NORTHEAST QUARTER OF SAID SECTION 21 A DISTANCE OF 894.35 FEET , TO THE TRUE POINT OF BEGINNING;

THENCE CONTINUING ALONG SAID EAST LINE SOUTH 00 DEGREES 00 MINUTES 49 SECONDS WEST A DISTANCE OF 1,635.54 FEET;

THENCE DEPARTING SAID EAST SECTION LINE NORTH 89 DEGREES 35 MINUTES 23 SECONDS WEST, A DISTANCE OF 1,309.91 FEET;

THENCE SOUTH 00 DEGREES 33 MINUTES 52 SECONDS EAST, A DISTANCE OF 278.48 FEET;

THENCE SOUTH 89 DEGREES 44 MINUTES 39 SECONDS EAST, A DISTANCE OF 771.51 FEET;

THENCE SOUTH 00 DEGREES 00 MINUTES 00 SECONDS WEST, A DISTANCE OF 518.73 FEET;

THENCE NORTH 89 DEGREES 19 MINUTES 55 SECONDS WEST, A DISTANCE OF 2,107.14 FEET TO A POINT ON THE NORTH-SOUTH MID-SECTION LINE OF SECTION 21;



THENCE NORTH 00 DEGREES 01 MINUTES 33 SECONDS WEST ALONG AND WITH SAID MID-SECTION LINE A DISTANCE OF 693.02 FEET, TO A 5/8 INCH IRON BAR ACCEPTED AS THE CENTER OF SAID SECTION 21;

THENCE NORTH 00 DEGREES 01 MINUTES 53 SECONDS WEST ALONG AND WITH SAID MID-SECTION LINE A DISTANCE OF 757.86 FEET TO THE SOUTHWEST CORNER OF THE FINAL PLAT OF KENLY FARMS I AS RECORDED IN BOOK 641, PAGE 14;

THENCE DEPARTING SAID MID-SECTION LINE NORTH 89 DEGREES 58 MINUTES 42 SECONDS EAST, A DISTANCE OF 223.08 FEET;

THENCE SOUTH 45 DEGREES 04 MINUTES 17 SECONDS EAST, A DISTANCE OF 106.25 FEET TO A NON-TANGENT CURVE CONCAVE TO THE SOUTH, HAVING A RADIUS OF 12.00 FEET, THE CENTER WHICH BEARS SOUTH 45 DEGREES 04 MINUTES 16 SECONDS EAST; THENCE EASTERLY ALONG THE ARC OF SAID CURVE, THROUGH A CENTRAL ANGLE OF 36 DEGREES 03 MINUTES 06 SECONDS, AN ARC LENGTH OF 7.55 FEET TO A REVERSE CURVE HAVING A RADIUS OF 1782.70 FEET;


SHEET 1 OF 3

CMX PROJ. 6763	<b>KENLY FARMS</b>	7740 N. 16TH ST. STE.100 PHOENIX, AZ 85020 PH (602) 567-1900 FAX (602) 567-1901 www.cmxinc.com	
DATE: DEC. 2003			
SCALE: NONE	<b>PHASE 2 LEGAL</b>		
DRAWN BY: SKF			
CHECKED BY: RRN			

THENCE NORTHEASTERLY ALONG THE ARC OF SAID CURVE, THROUGH A CENTRAL ANGLE OF 10 DEGREES 26 MINUTES 09 SECONDS, AN ARC LENGTH OF 324.70 FEET;  
 THENCE SOUTH 20 DEGREES 15 MINUTES 32 SECONDS EAST, A DISTANCE OF 50.05 FEET TO THE BEGINNING OF A TANGENT CURVE CONCAVE WESTERLY, HAVING A RADIUS OF 575.00 FEET;  
 THENCE SOUTHERLY ALONG THE ARC OF SAID CURVE, THROUGH A CENTRAL ANGLE OF 02 DEGREES 44 MINUTES 47 SECONDS, AN ARC LENGTH OF 27.56 FEET;  
 THENCE NORTH 72 DEGREES 29 MINUTES 15 SECONDS EAST, A DISTANCE OF 50.00 FEET;  
 THENCE NORTH 25 DEGREES 06 MINUTES 47 SECONDS EAST, A DISTANCE OF 28.99 FEET TO THE A NON-TANGENT CURVE CONCAVE TO THE NORTH, HAVING A RADIUS OF 1842.70 FEET, THE CENTER WHICH BEARS NORTH 21 DEGREES 39 MINUTES 20 SECONDS WEST;  
 THENCE NORTHEASTERLY ALONG THE ARC OF SAID CURVE, THROUGH A CENTRAL ANGLE OF 37 DEGREES 39 MINUTES 56 SECONDS, AN ARC LENGTH OF 1211.37 FEET TO A REVERSE CURVE HAVING A RADIUS OF 470.00 FEET;  
 THENCE NORTHEASTERLY ALONG THE ARC OF SAID CURVE, THROUGH A CENTRAL ANGLE OF 60 DEGREES 05 MINUTES 44 SECONDS, AN ARC LENGTH OF 492.97 FEET;  
 THENCE SOUTH 89 DEGREES 13 MINUTES 32 SECONDS EAST, A DISTANCE OF 547.99 FEET;  
 THENCE SOUTH 44 DEGREES 36 MINUTES 22 SECONDS EAST, A DISTANCE OF 28.47 FEET;  
 THENCE SOUTH 89 DEGREES 59 MINUTES 11 SECONDS EAST, A DISTANCE OF 55.00 FEET TO THE POINT OF BEGINNING.



SHEET 2 OF 3

CMX PROJ. 6763	<b>KENLY FARMS</b>	7740 N. 16TH ST. STE.100 PHOENIX, AZ 85020 PH (602) 567-1900 FAX (602) 567-1901 www.cmxinc.com	
DATE: DEC. 2003			
SCALE: NONE	CACTUS & LITCHFIELD SURPRISE, ARIZONA		
DRAWN BY: SKF	<b>PHASE 2 LEGAL</b>		
CHECKED BY: RRN			